

The logo for the Deaf Festival, featuring the words "Deaf Festival" in a white, stylized, handwritten font. The word "Deaf" is on the top line and "Festival" is on the bottom line. There are small white stars and dots around the text, and the logo is set against a dark blue circular background.

Deaf
Festival

The background is a vibrant orange color. There are several decorative elements: a large green shape in the top left corner, a large blue circle in the top right corner, a pink circle in the bottom left corner, and a white starburst graphic in the bottom right corner. The main title is centered in a bold, blue, sans-serif font.

DEAF FESTIVAL SYDNEY FOOD VENDORS INFO KIT

29 AUGUST 2026
CATHY FREEMAN PARK, SYDNEY OLYMPIC PARK



OVERVIEW OF DEAF FESTIVAL

The Deaf Festival Sydney is an annual community festival that celebrates and brings together Deaf, deafblind and hard of hearing Australians, alongside their families and allies.

Deaf Festival Sydney fosters a sense of community spirit and celebrates Deaf culture.

Deaf Festival Sydney 2026 is a single-day event being held on Saturday 29 August 2026 from 10.00am – 4.00pm at Cathy Freeman Park at Sydney Olympic Park.

AIMS & OBJECTIVES:

- Celebrate diversity within the Deaf and hard of hearing community.
- Unify the Deaf Community across generations.
- Promote Deaf culture, language, and history.
- Support Deaf businesses and spread Deaf ecosystem awareness.
- Create a platform for the wider community to engage with and learn from the Deaf community.



WHAT YOU WILL NEED FOR YOUR APPLICATION

- Copy of your menu including prices and dietaries that you cater for
- Copy of your current Public Liability Insurance Certificate of Currency for \$20 million
- Copy of your business logo
- 1-3 images of your stall / food truck from a previous event

COMMUNICATION SUPPORT VOLUNTEERS

You will have the option to request a communication support volunteer which will be shared between several food vendors at no additional cost.

The Auslan proficiency of the communication support volunteers may vary from beginner level to advanced, depending on availability.

If you would prefer a dedicated NAATI-certified interpreter, we recommend booking early. Please reach out if you would like more information on this.

FOOD VENDORS INFORMATION SESSION

All successful applicants will also be invited to an optional Information Session on Wednesday, 12 August 2026.



DRAFT SITE MAP

Pictured here is a draft site plan for 2026. Please note this site plan is subject to change.

We will be allocating stallholders depending on the request of needing electricity or not.

BUMP IN AND BUMP OUT

Bump in:

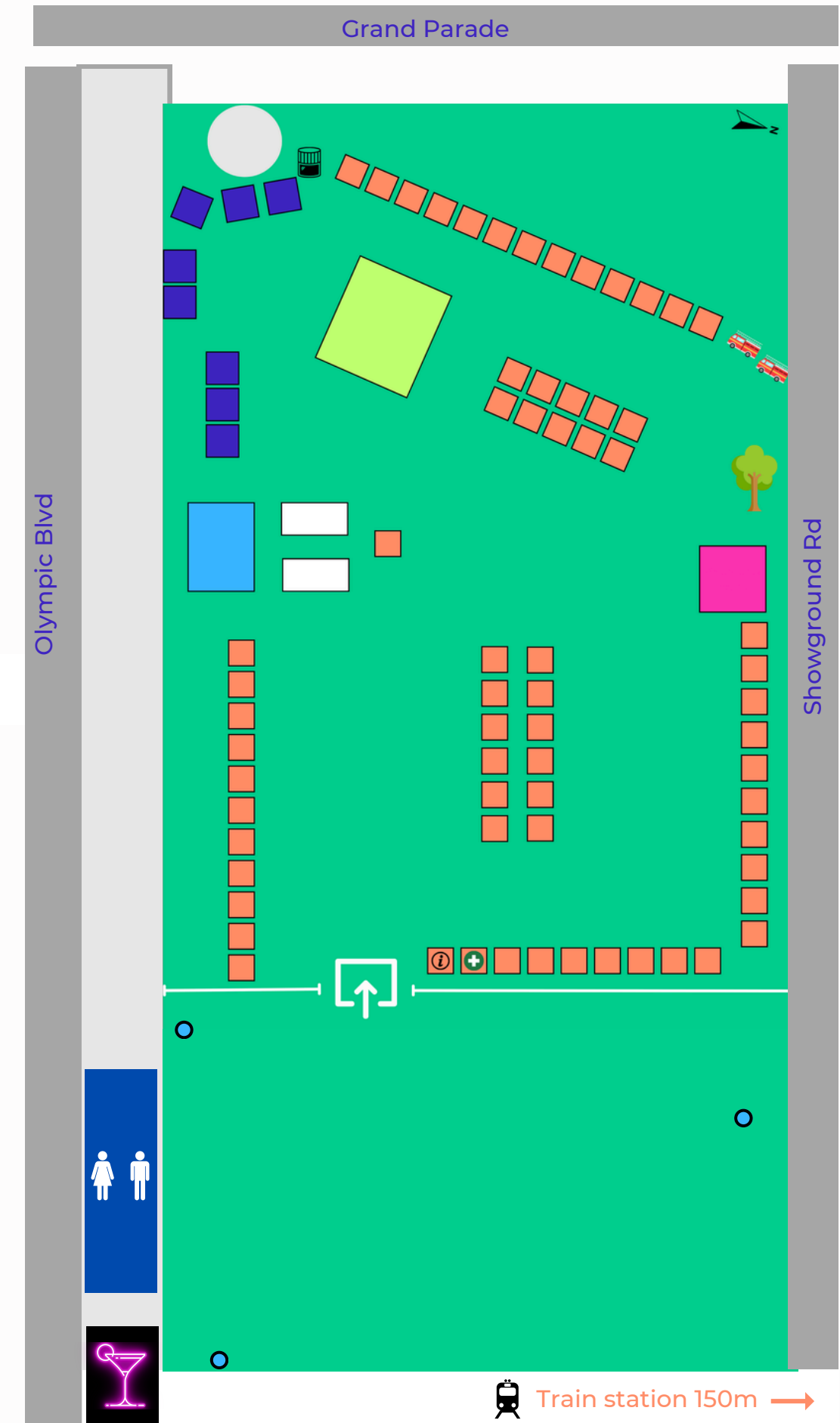
- Bump in time for food vendors is from 7:00am.
- If have have pre-paid for parking, you can park on Olympic Boulevard as soon as you have unpacked.
- All food vendors to be set up and ready to go by 9:30am

Bump out:

- All food vendors must stay open until 4.00pm, at which time food vendors must pack up.
- Bump out is between 4:30pm and 5:30pm.

FESTIVAL MAP

-  Public toilets
-  Main stage
-  Stage seating
-  Activities Tree
-  Activities Zone
-  Dining Hall
-  Stalls
-  Food stalls
-  Grass area
-  The Locker Room
-  Drinking Fountain
-  The Olympic Cauldron
-  Entry Point



WASTE

You are responsible for removing all the waste generated by your stall. NO stall waste is to be placed in council or the event bins. If you do not remove your rubbish from the site, you will be charged a \$200 rubbish removal fee.

FIRST AID / EMERGENCIES

- St John's Ambulance are located in stall near the main entrance.
- In the event of a serious emergency, **please call 000** and notify DFS2026 Organisers
- If you are asked to evacuate Cathy Freeman Park, please cross the road to Accor Stadium

WET WEATHER

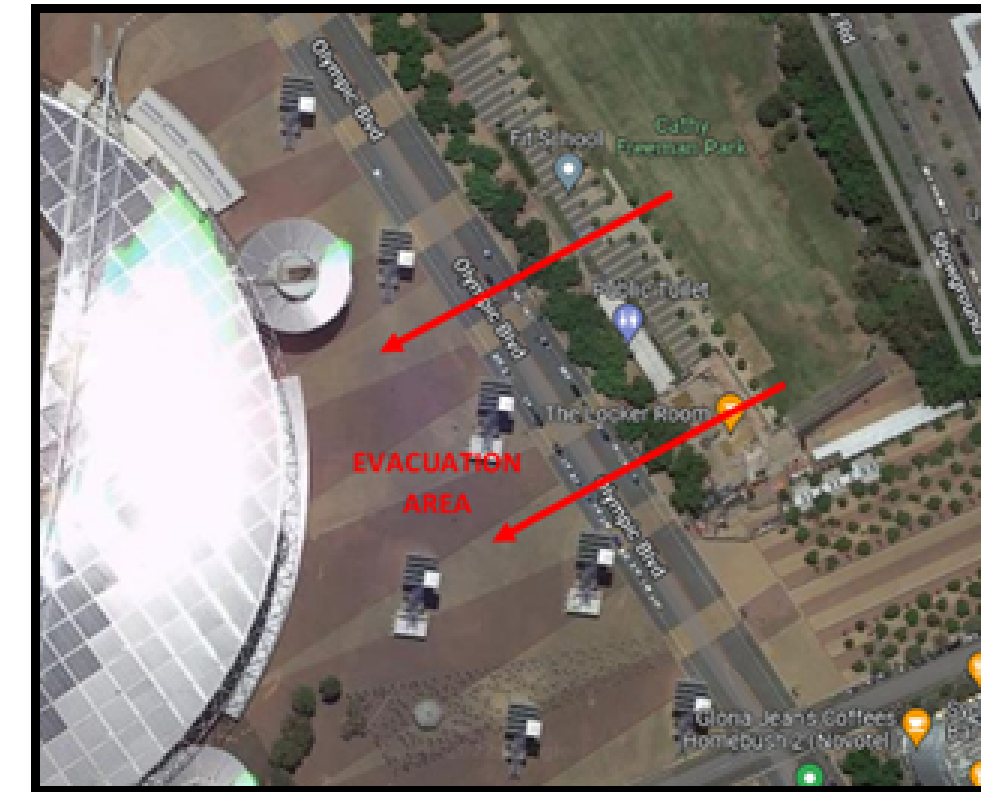
The festival will operate in the event of rain.

In the event of exceptional weather conditions, Sydney Olympic Park may decide to cancel the festival for the safety of all involved. This would be communicated via SMS and email.

Deaf Festival Sydney organisers will not be liable for any expenses incurred by stallholders and food vendors should the event be cancelled.

FEEDBACK

Following the event, we will send out a survey. Please respond, it helps us improve the event for everyone.





**FOR MORE INFORMATION,
CONTACT:**

SYDNEY@DEAFFESTIVAL.COM.AU

29 AUGUST 2026

CATHY FREEMAN PARK, SYDNEY OLYMPIC PARK